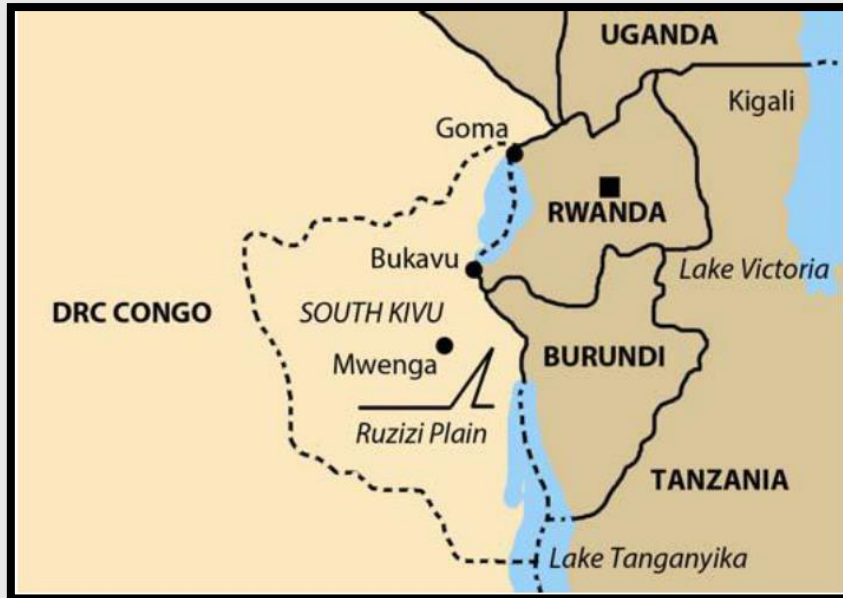


Maji Ya Amani – Water for Peace in the Ruzizi Plain, South Kivu, DRC



Dr. David Betge, Sector Specialist Landrights, ZOA, 01-02-2018

Project Context

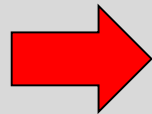


- Water crucial for livelihoods → availability is limited → rainfall unreliable.
- Irrigation system (set up in 1952) broke down → at least 500 ha not irrigated.
- High potential for increasing food security and improving livelihoods opportunities.
- Communal conflict → between ethnic groups BUT also agriculturalists and pastoralists (intra-ethnic).

Project Overview

Specific challenges:

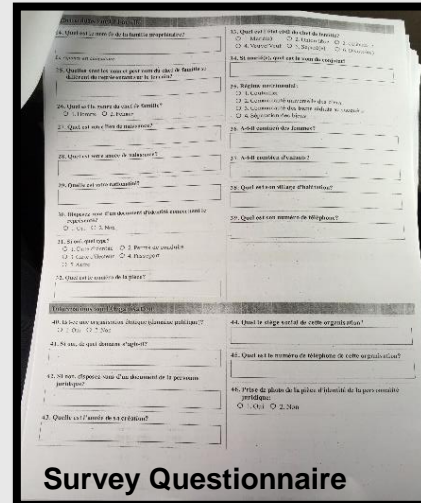
- Legal uncertainty → national vs. provincial, statutory vs. traditional.
- Enmity between community leaders.
- Lack of maps, documentation/registration of land rights → rights protection.
- Security in the area.



Participatory mapping, zoning maps and resolution of land conflicts required as basis for irrigation to start!



Demarcation team – field exercise, 01-2018



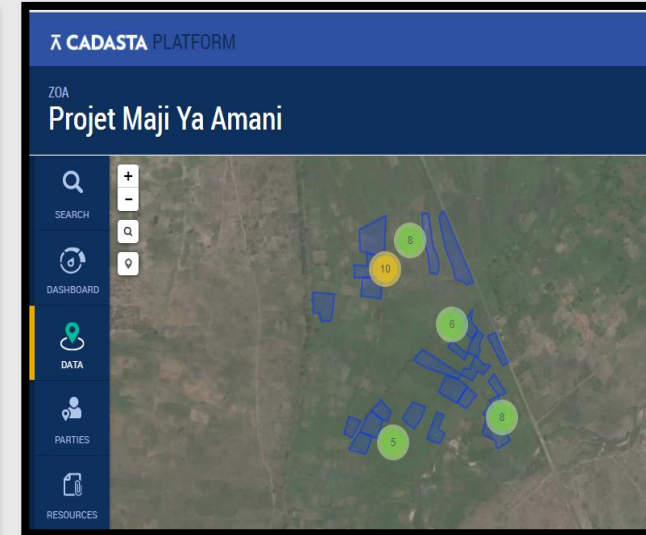
Survey Questionnaire



- Personal data
- Existing conflicts?
- Parties involved?
- Possession of proof of ownership or usage?
- etc.

 **CADASTA**

Project Overview ctd.



Post demarcation activities:

- Publication of results
- Communal meetings/discussion
- Conflict resolution.
- Sustainable rights protection: legally, communally, intermediate solution.

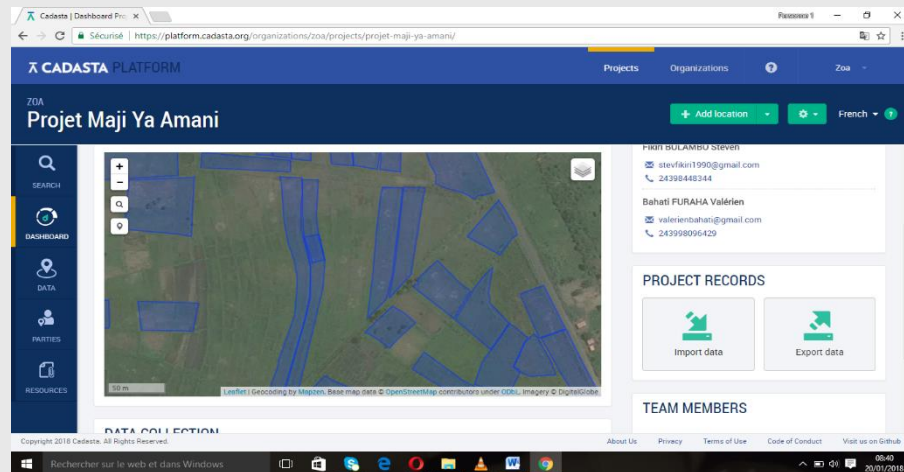
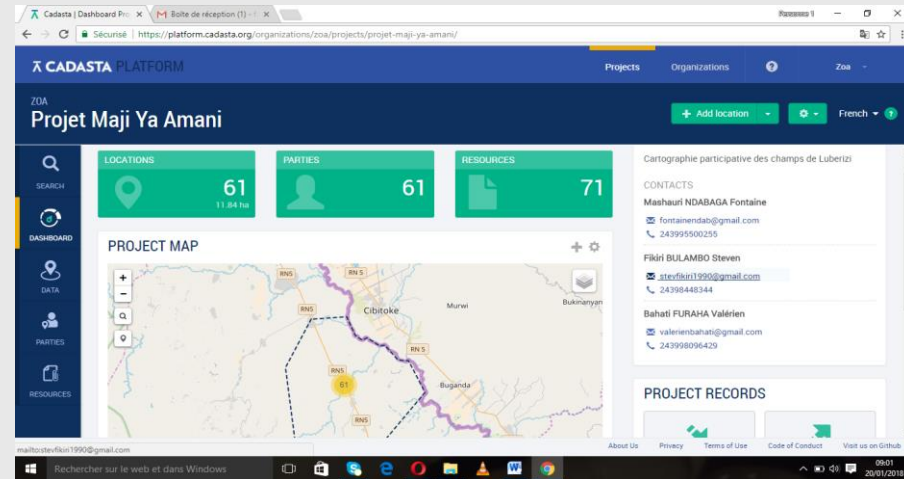
Results so far:

Successes:

- High sensibility of ZOA team (Do-no-harm).
- Diverse team setup.
- Agreement of community leaders to participate and political support.
- Participatory mapping started.
- MoU between farmers – herders.

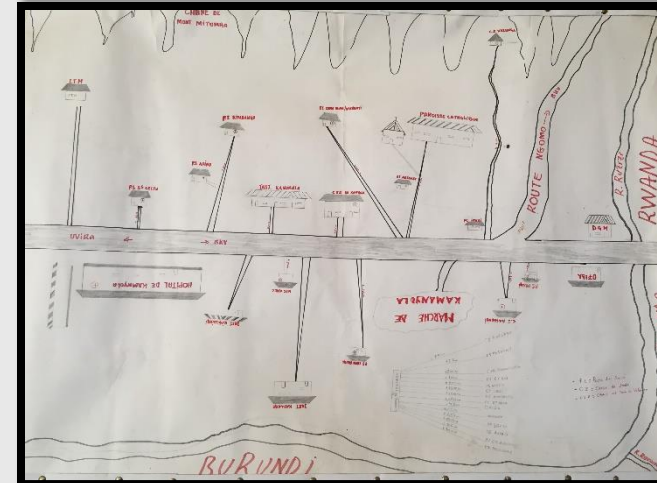
Challenges:

- Fears related to technical process.
- Fears related to power structures.
- Sufficient integration of stakeholders in inception – jobs.
- Legal uncertainty.
- Land issues viewed as “activity” → not as central as it should be!
- Security situation.



Conclusions

- Linking early recovery and development requires highly diverse skillsets/capacities → Partnerships/Consortia.
- Strong and constant coordination with partners necessary → adaptive programming and flexibility need to be implemented by all.
- Budgetary flexibility needed.
- Contingency planning!
- M&E on conflict sensitivity!



Thank you for your attention!



Farmers, Luberizi 01-2018