

16th International
Conference
on Environmental Science
& Technology



4-7 September 2019 Rhodes, Greece



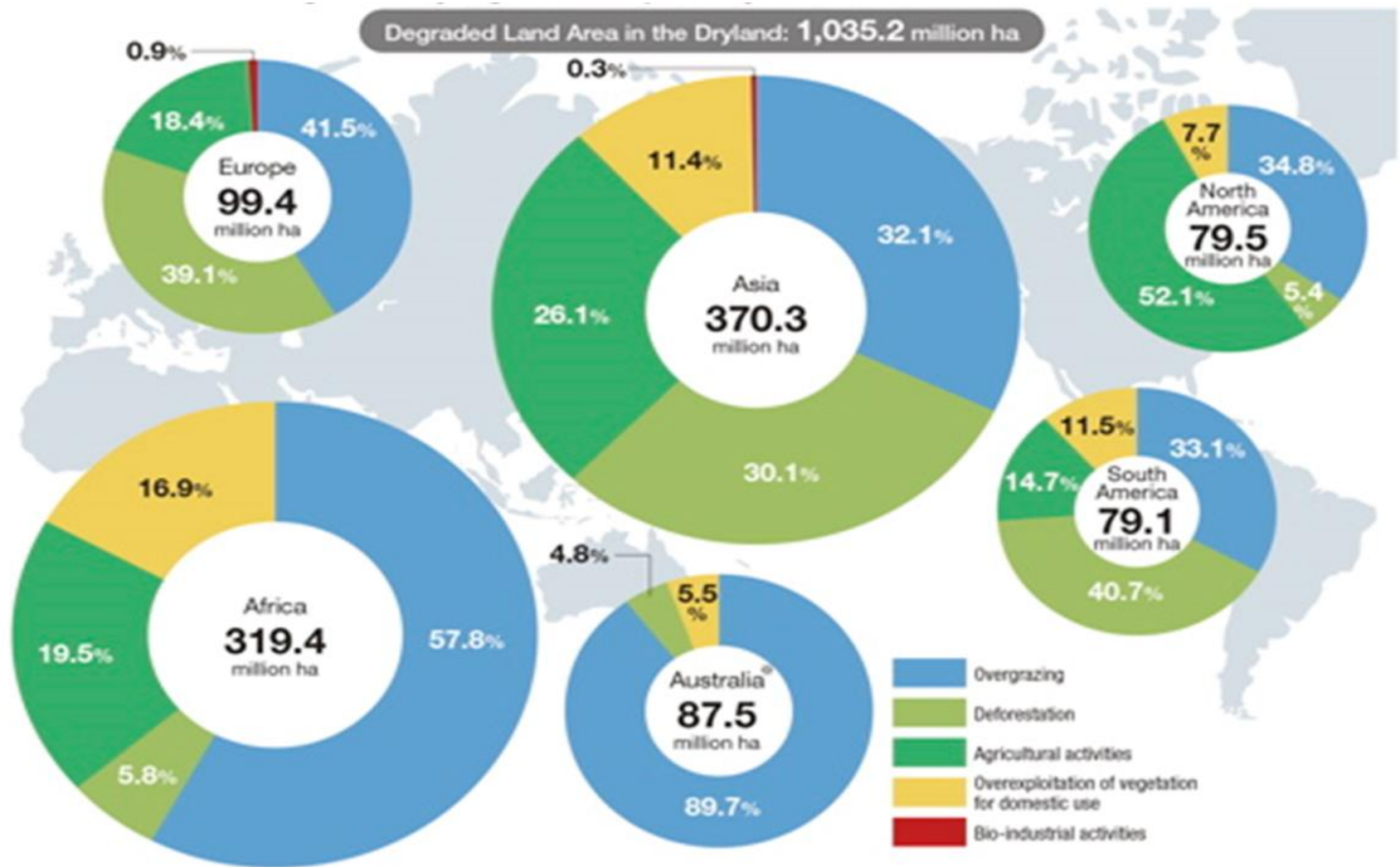
Rainwater harvesting from roads enhanced indigenous pasture establishment in a typical African dryland environment

Kevin Zowe Mganga

Department of Agricultural Sciences

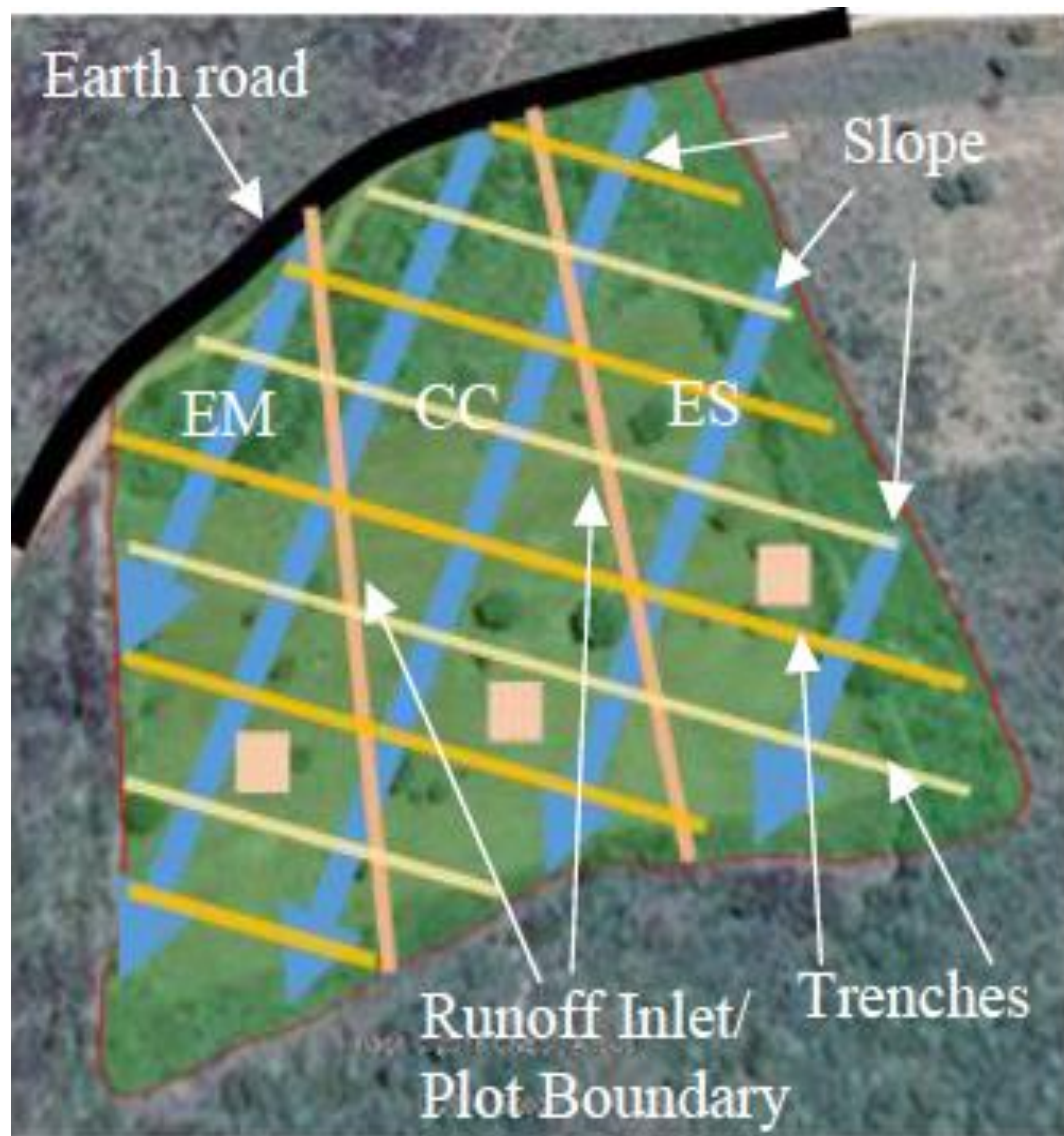
South Eastern Kenya University

Introduction - Degradation in Global Drylands



Source: World atlas of land degradation, 2nd Edition (UNEP)

Methods



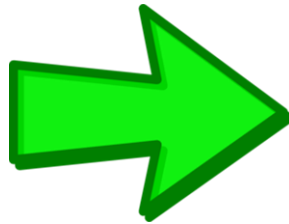
Results and Conclusions



BEFORE



reseeding
+
rainwater
harvesting



AFTER

Combining grass reseeding and rainwater harvesting from roads has great potential to enhance pasture production and rehabilitate degraded global dryland environments



Thank you for your time and
welcome to our poster

