



# 2+6=17

## Linking WASH and Nutrition

**Jona Toetzke** (German WASH Network)

Workshop DGIS | 14 January 2019 | Den Hague

Developed by:



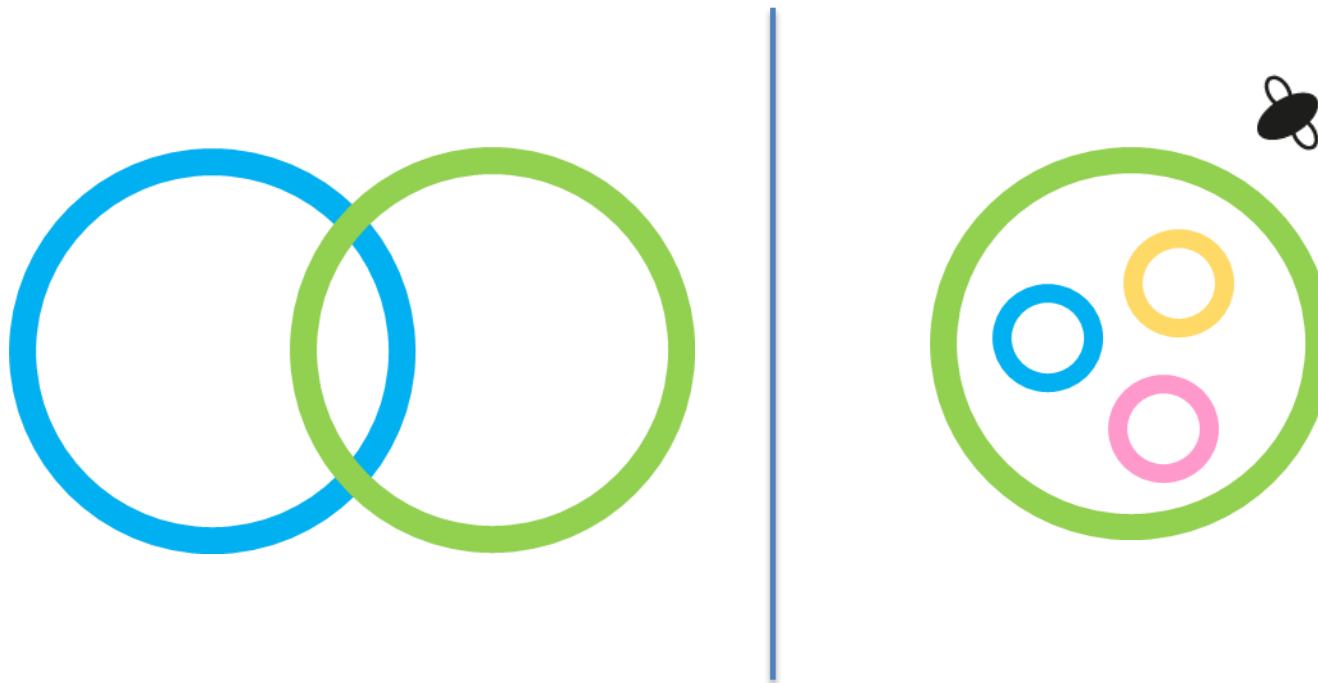
# German WASH Network

GERMAN  
**WASH**  
NETWORK





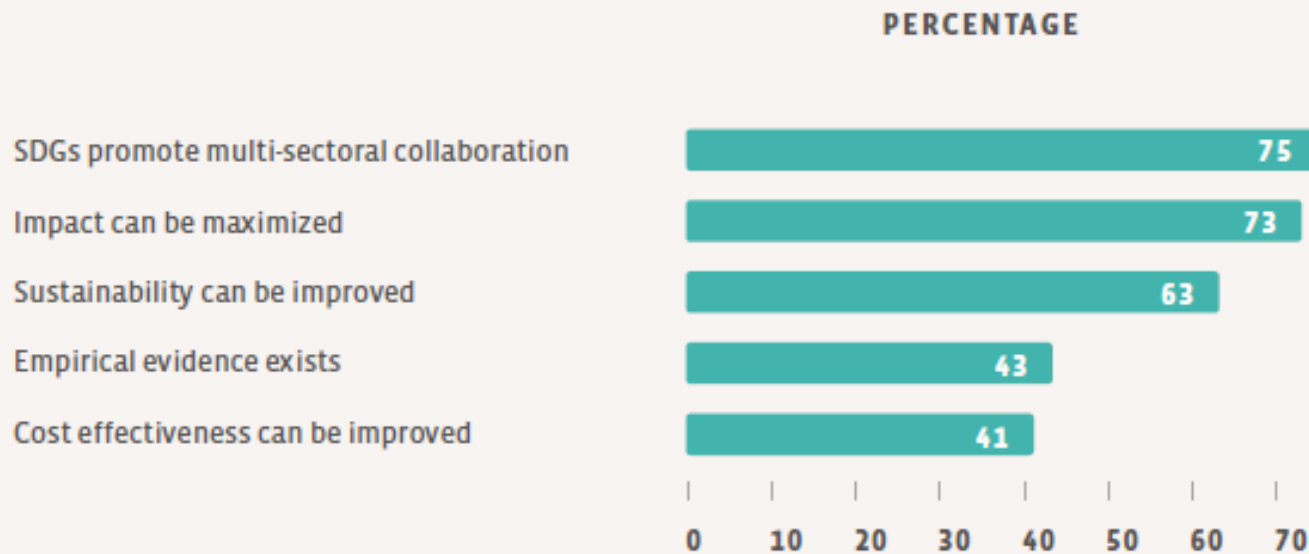
# WASH-Nutrition Perspectives






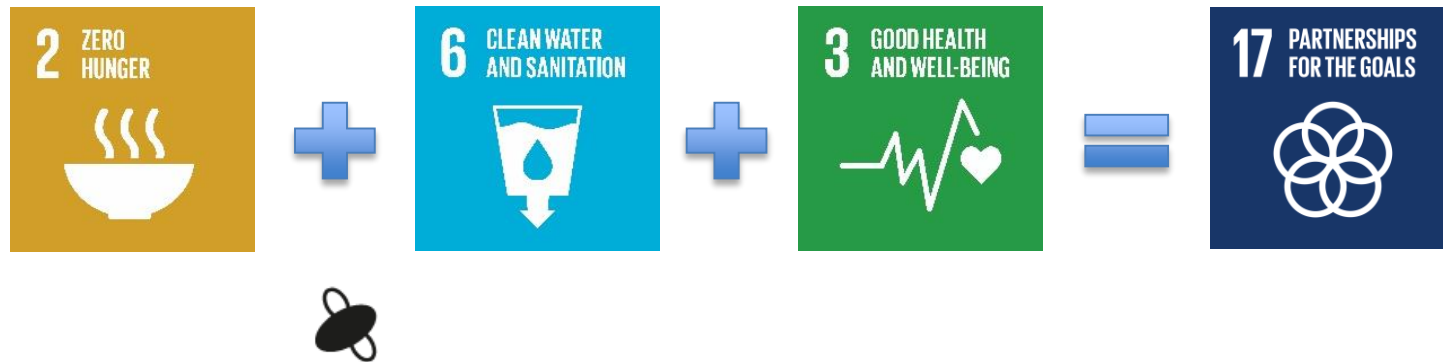
# What motivates us to push the nexus?

Motivations Why Organisations  
Integrate Wash-Nutrition (N=51)



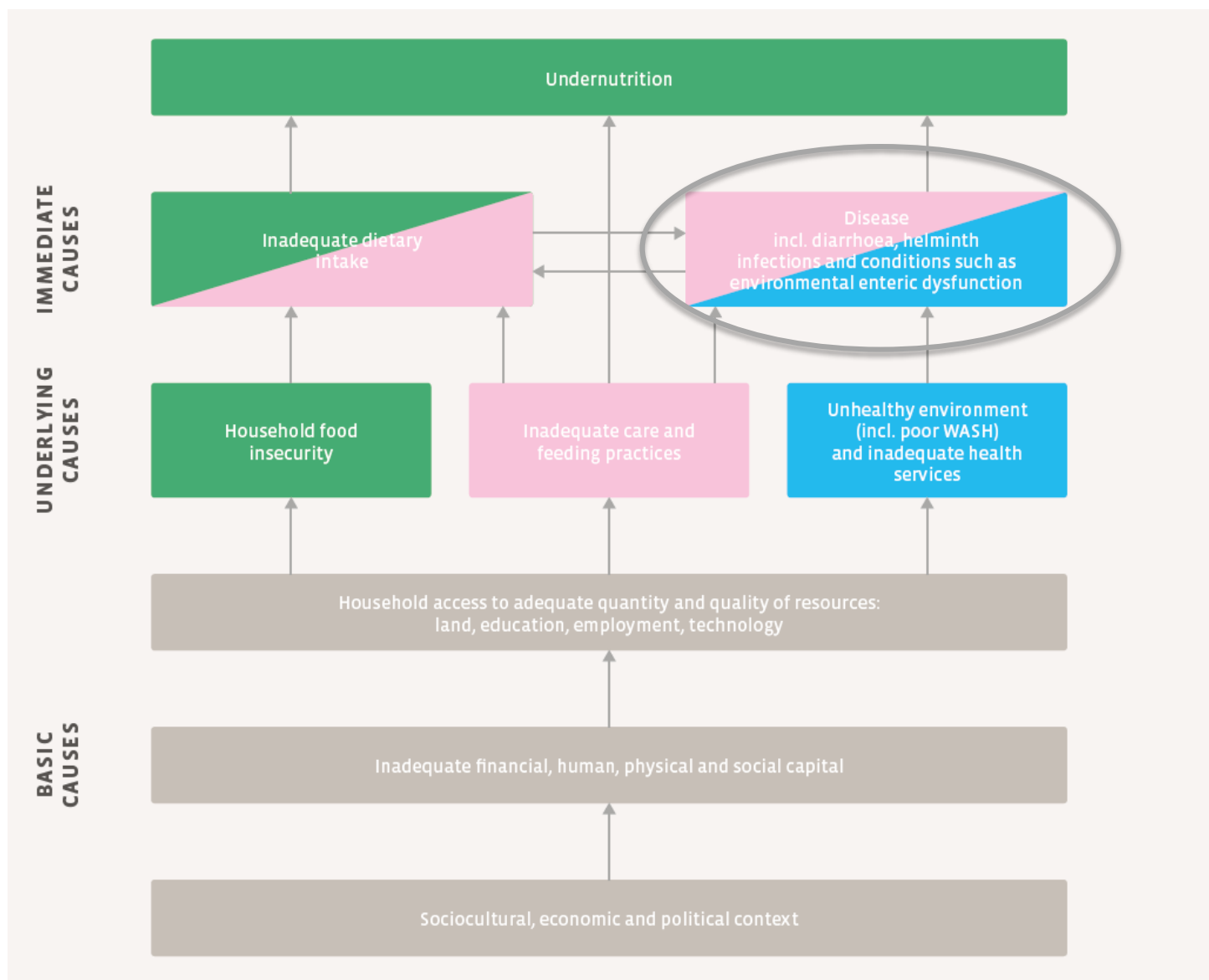
1. SDGs – The Global Framework 
2. WASH-Nutrition – Understanding the Link
3. Integration – The Link in Practice
4. Evidence – Research Findings
5. What can I do? – A Way Forward

# 1. SDGs – The Global Framework



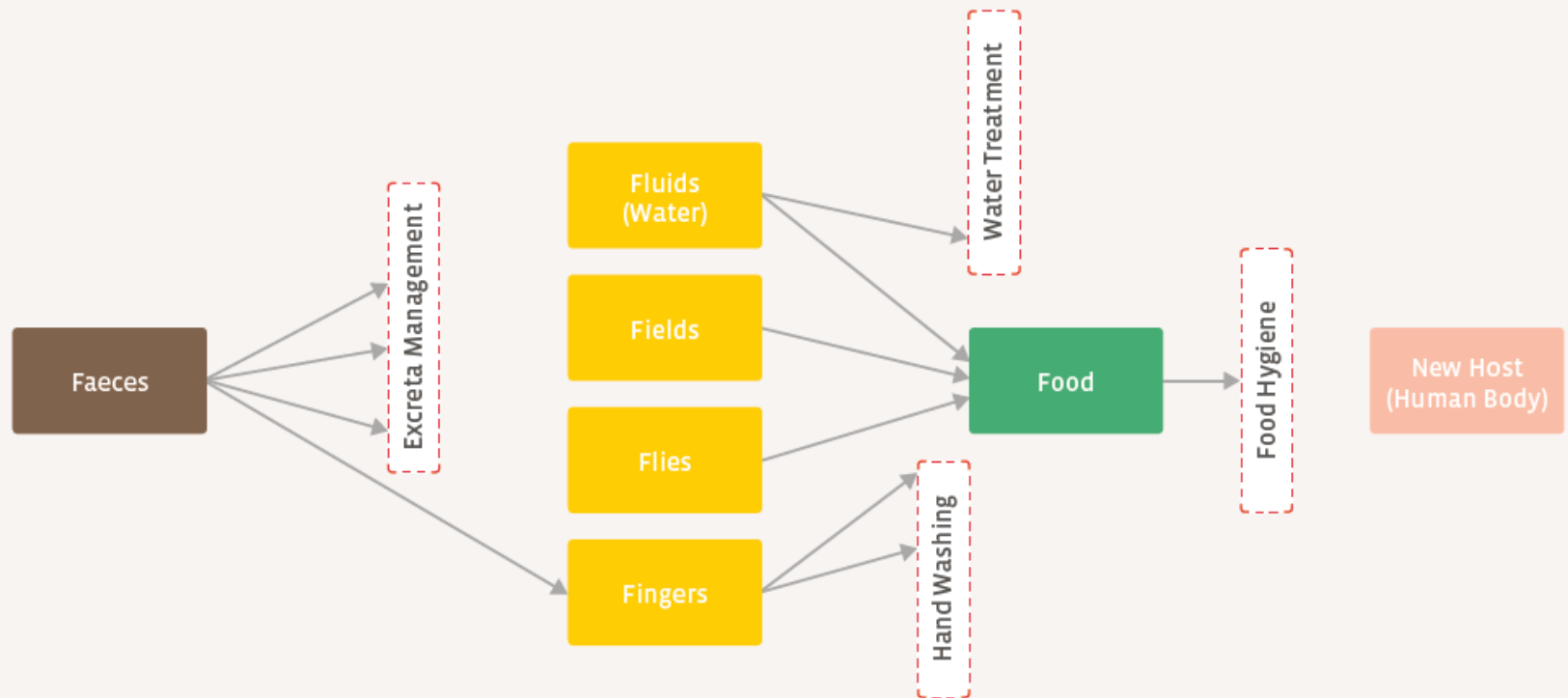
- The SDGs are integrated and indivisible  
“Leave no one behind” – Overlap of affected populations

## 2. Conceptual Framework of Undernutrition





## 2. F-Diagram



Source: Wagner et al. (1958), adapted

## 2. Common Entry Points

Common Objectives	Co-Targeting	Shared Platforms for Service Delivery	Co-Location
Improvement of Nutritional Status	Mothers and Infants	Nutrition and Community Centres	Areas with High Prevalence of SAM/GAM
Health Improvements	The First 1000 Days	Health Care Facilities and ECD Centres	Areas with High Prevalence of Acute Diarrhoea
Reduction of EED	Children under 5 Years of Age	Schools	Areas with High Stunting Rates
Reduction of Stunting	Women in the Reproductive Age	Other Public Institutions	Communities Practicing Open Defecation
	The Poorest Populations	Community Mobilizers	Districts, Villages, Communities
	Healthcare Staff	Positive Deviance Programmes	

EED – Environmental Enteric Dysfunction

ECD – Early Child Development

SAM – Severe Acute Malnutrition

GAM – Global Acute Malnutrition

Source: German Toilet Organization (2017)



# 3. Continuum of Integration



Source: FHI360 (2016), adapted

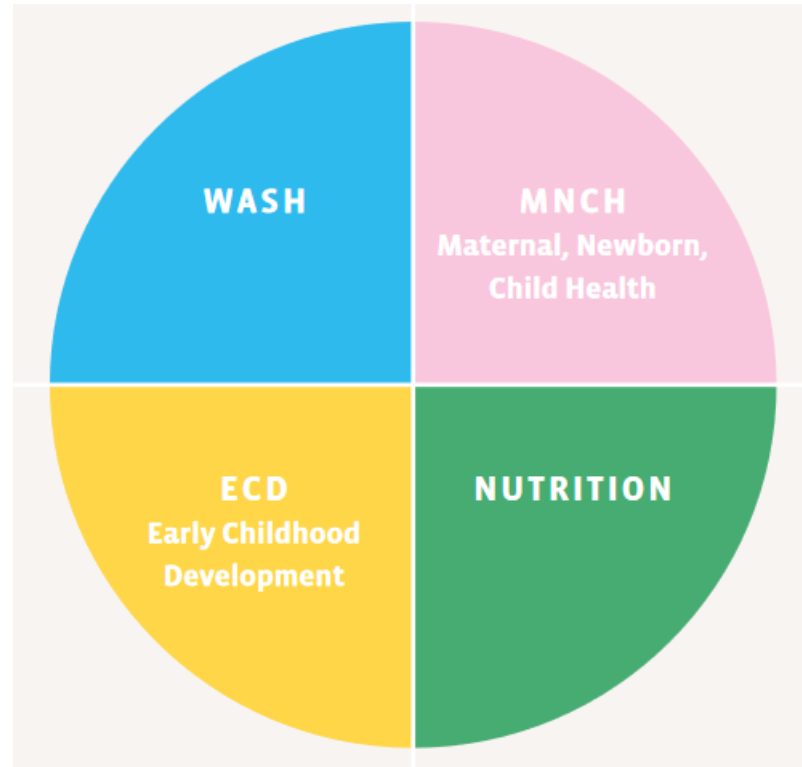
“Choosing the appropriate level of integration is therefore a strategic decision, which should be informed by an analysis of the expected costs and benefits of the various options”

German WASH Network (2017)

- Clean hands at any times
- Proper disposal of faeces (child & animal)
- ...




- Protected and safe child-friendly spaces for play
- Hygiene for baby (bathing, teething objects)
- ...



Source: World Vision International (2017), adapted

- Clean births
- Skilled birth attendants
- ...
- Exclusive breastfeeding < 6 months
- Diverse and nutritious food
- ...

	Acute	Chronic
Interventional Research	Proven effect on SAM treatment (Ouadinut 2017, PUR2 2017, Gates Mali 2015, Concern CRAM Chad 2016)	No proven effect (SHINE, WASH Benefits) 
Observational Research	Proven effect or association on SAM prevalence (DDMAS Chad 2017, PLOS Yemen 2018)	Proven impact (Cochrane 2013, Spears India 2012, etc.)

Source: ACF (2018)

- Factors are in multi-causal interrelations
- Stunting is more related to a contaminated environment than to household level WASH
- Reducing faecal contamination of the environment requires holistic approaches
- More research is needed to understand the key underlying causes and pathways leading to diarrhoea and stunting



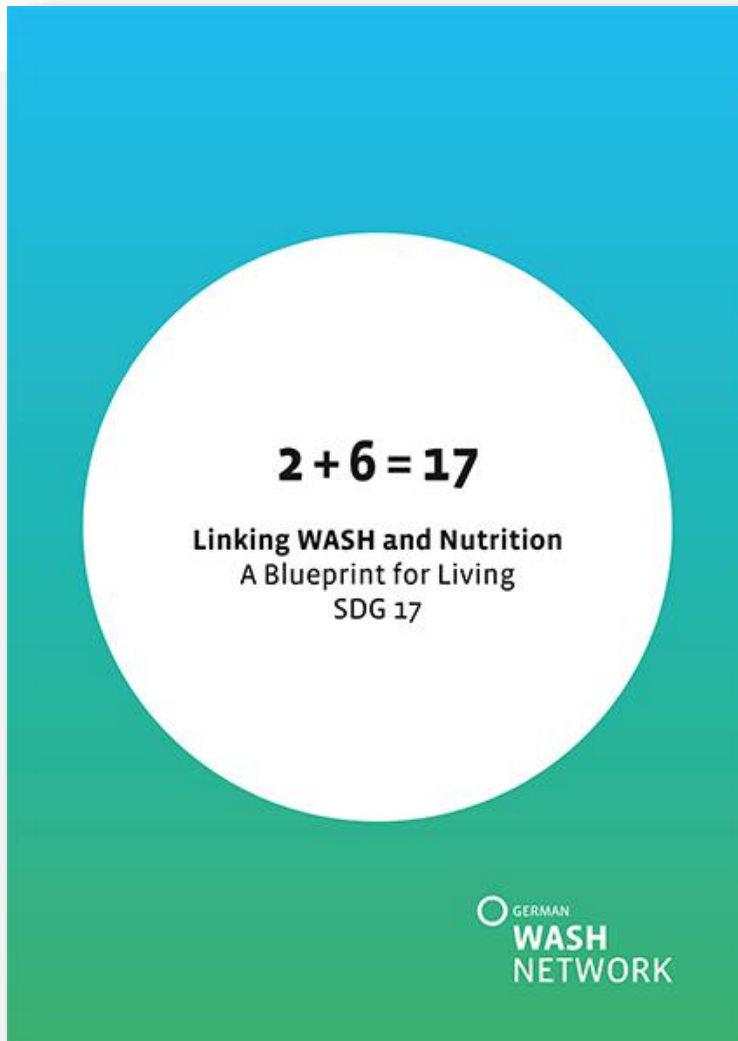
*Other positive effects can include cost efficiency, sensitive staff, reduced administration*



## 4. What can I do? – A Way Forward

1. Know your counterpart
2. Create mutual understanding / establish sensitivity
3. Institutionalize exchange
4. Identify synergies and use them





[www.washnet.de/en/publications](http://www.washnet.de/en/publications)

Further reading

- The missing ingredients report (WaterAid, 2016)  
[www.susana.org/en/resources/library/details/2785](http://www.susana.org/en/resources/library/details/2785)
- WASH'Nutrition Practical Guidebook (ACF, 2017)  
[www.susana.org/en/resources/library/details/2716](http://www.susana.org/en/resources/library/details/2716)
- The Recipe for Success (WaterAid et al., 2017)  
[www.susana.org/en/knowledge-hub/resources-and-publications/library/details/2857](http://www.susana.org/en/knowledge-hub/resources-and-publications/library/details/2857)