



## WASH-FNS, Ethiopia

An integrated approach on WASH and Nutrition

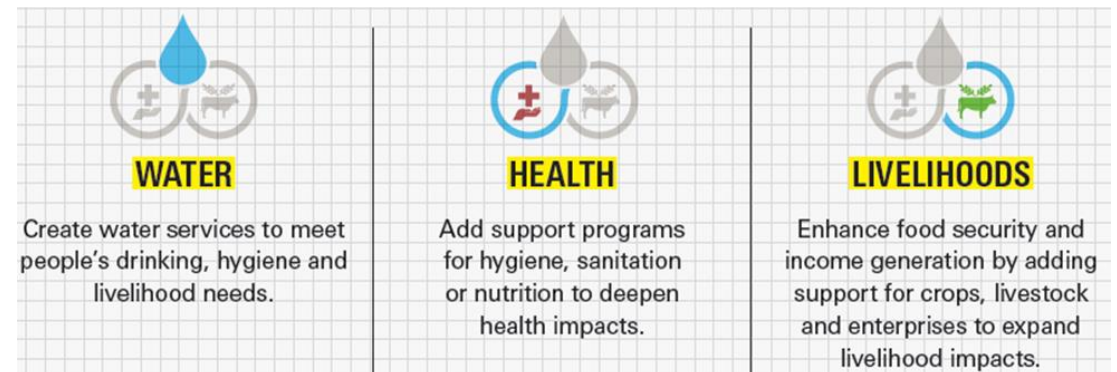
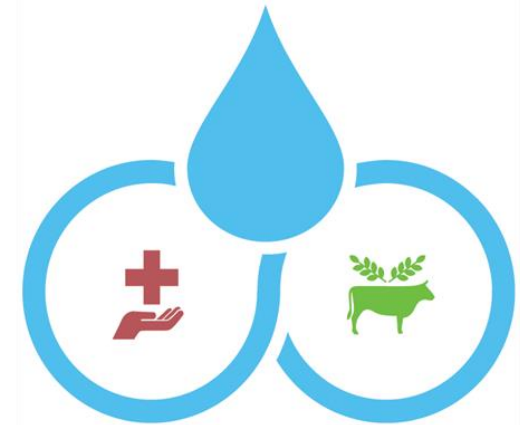
# Entry point for WASH & Food Security

Integrated WASH-Nutrition programming linking with Agriculture/Food security (**Multiple-use water services**)

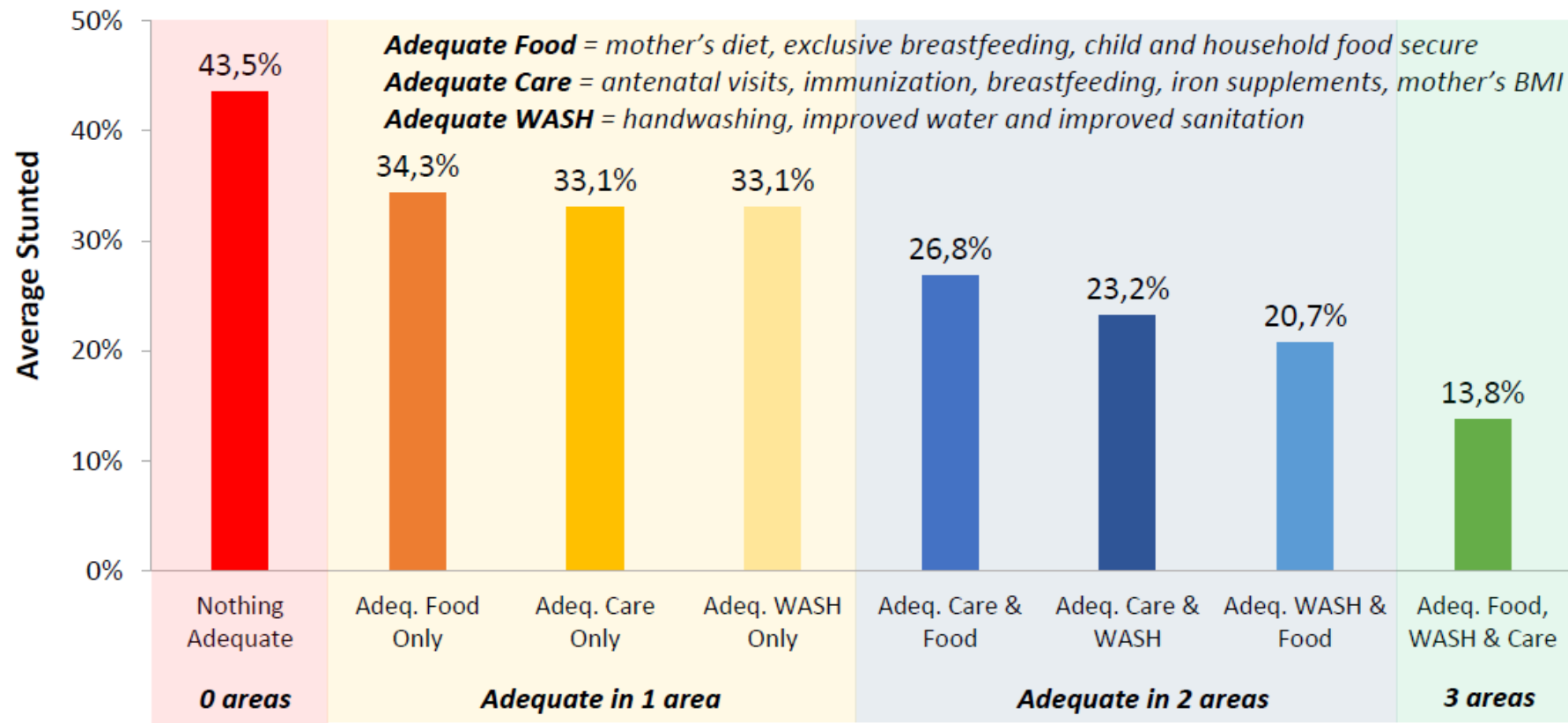
**Multiple-use water services** is a holistic approach to sustainable water services that improves dignity, health (drinking water, hygiene and sanitation) and livelihoods

Supplemented with:

- Technologies
- Nutrition sensitive agricultural extension works
- Improving the livelihood of the community

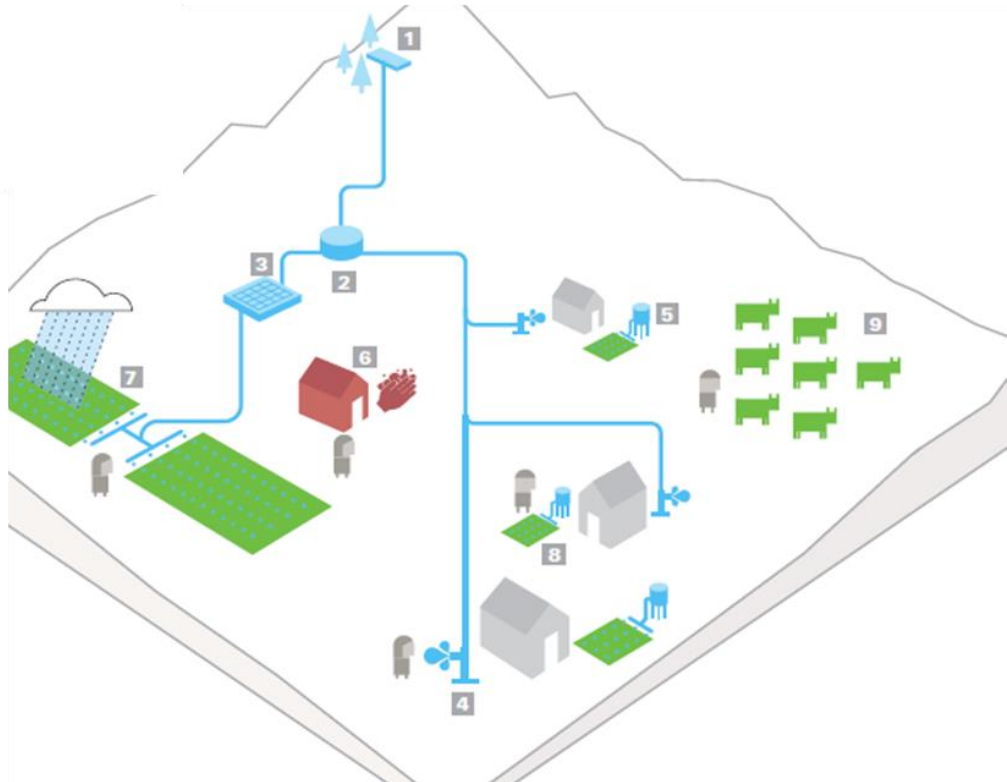


# Key Incentive WASH-Nutrition integration



SOURCE: Newman, J (2013) *How Stunting is related to Adequate Food, Environmental Health and Care: Evidence from India, Bangladesh, and Peru*, World Bank

# Key Incentive WASH-Nutrition integration

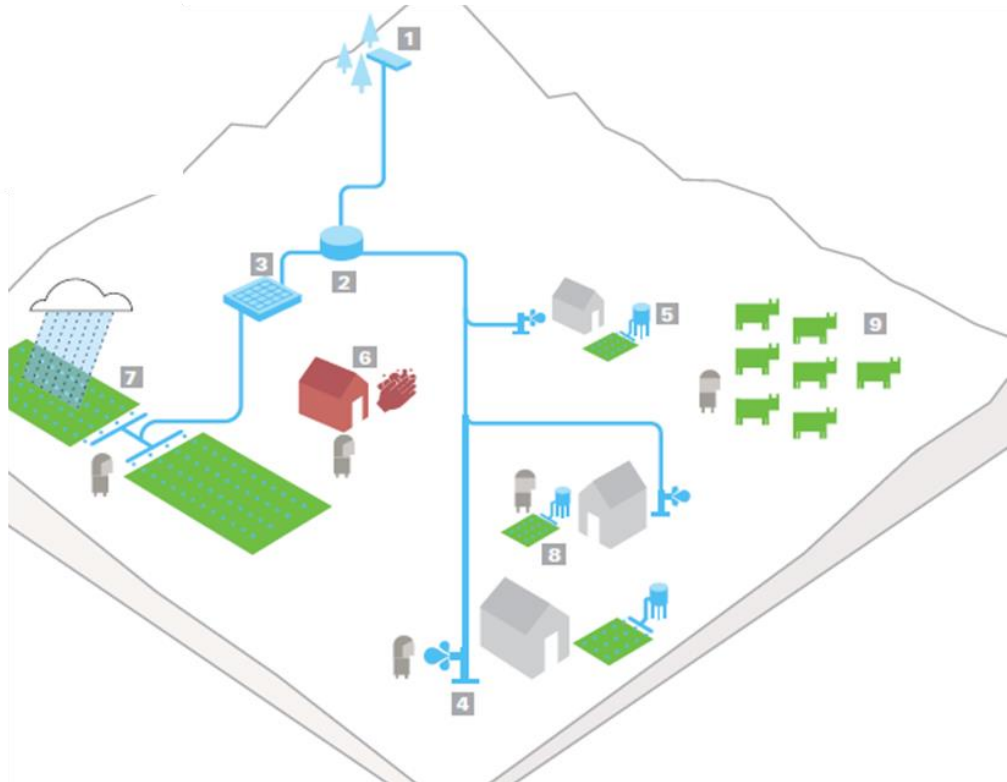


WASH-FNS benefits from Integrating WASH and Agriculture/MUS

## Water and Sustainability Benefit

- ✓ Borehole water source and closed reservoir protect drinking water from contamination.
- ✓ Tap stands near households greatly reduce time fetching water. **From 40 minutes.**
- ✓ Safe water for household use and for livestock watered at the homestead.
- ✓ Increased income from gardening used to maintain system over time.
- ✓ Sustainability of water services enhanced by establishment and training of management committee

# Key Incentive WASH-Nutrition integration

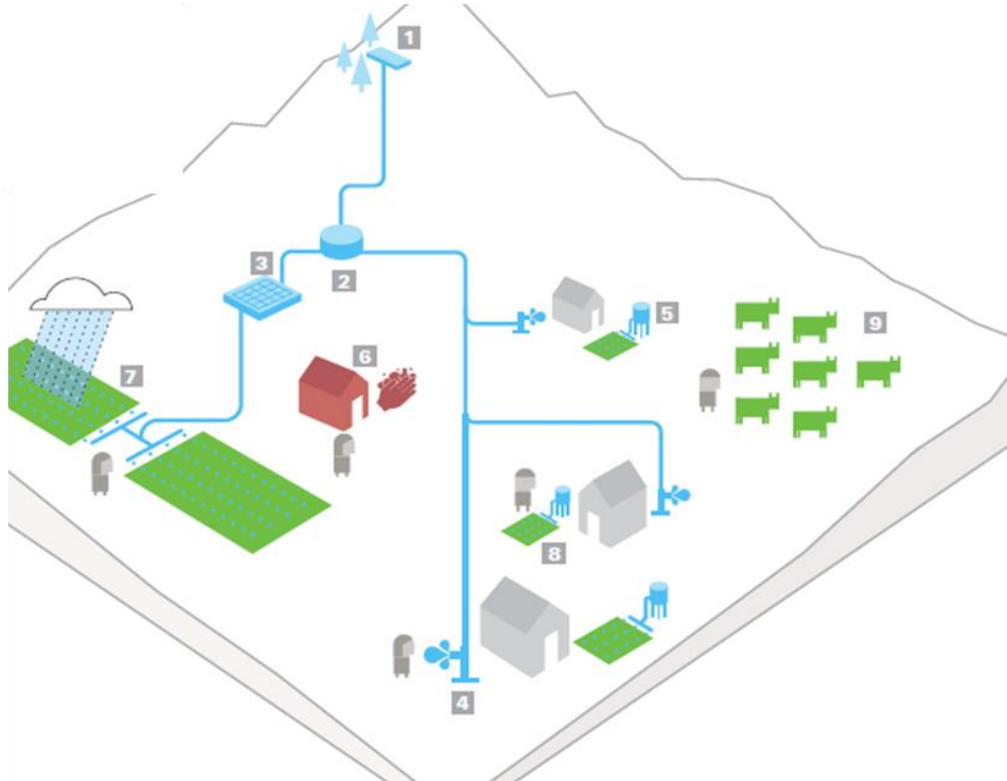


WASH-FNS benefits from Integrating WASH and Agriculture/MUS

## Health Benefit

- ✓ Safe water, hygiene awareness, and more handwashing reduce diarrheal diseases. **15%** (SOURCE, MTR)
- ✓ Increased adoption of latrines due to increased water availability and sanitation promotion. **84%**
- ✓ Promotion of handwashing and MHM (at school and community level)
- ✓ Knowledge of nutrition improves from common staple food to vegetable/fruit consumption.

# Key Incentive WASH-Nutrition integration



WASH-FNS benefits from Integrating WASH and Agriculture/MUS

## Livelihood and Women Empowerment Benefit

- ✓ Women's household gardens are converted to high-value crops due to increased access to water, agricultural extension and marketing.
- ✓ Income and food security are improved for households.
- ✓ Time saved from water collection can now be used for gardening.
- ✓ 50% of the WASHCOs are women (women will exercise for communal resource participation, decision and leadership)
- ✓ Women have active and leading role in CLTSH
- ✓ Families can afford to teach their children for higher level of education

# Plan International Ethiopia Strategic Approach for WASH and Nutrition

1

**House to house Extension work**



- ✓ Agricultural extension work through DA
- ✓ WASH SBCC work through HEW
- ✓ CLTSH through HEW, WDA, kebele leaders and teachers



2

**VSLG**



- ✓ Improving the saving culture of the community and increase purchasing capacity
- ✓ Establish VSLG with cooperative office at district level
- ✓ Facilitators at kebele/village level



3

**Communal and individual MUS (nutritional empowerment)**



- ✓ Depending on the source and the need
- ✓ For drinking, agricultural use, motivator for hygiene and sanitation promotion work both @ community and schools
- ✓ Solar power system, pedal pumps, rope and Washer pumps
- ✓ HH gardening, fishery
- ✓ Commercial crop to nutrition value crops
- ✓ Cattle trough



4

**Sanitation marketing**



- ✓ Establishment and training of product producer group
- ✓ Improved sanitation product distribution and installation



# Plan International Ethiopia WASH and Nutrition Programs: WASH-FNS

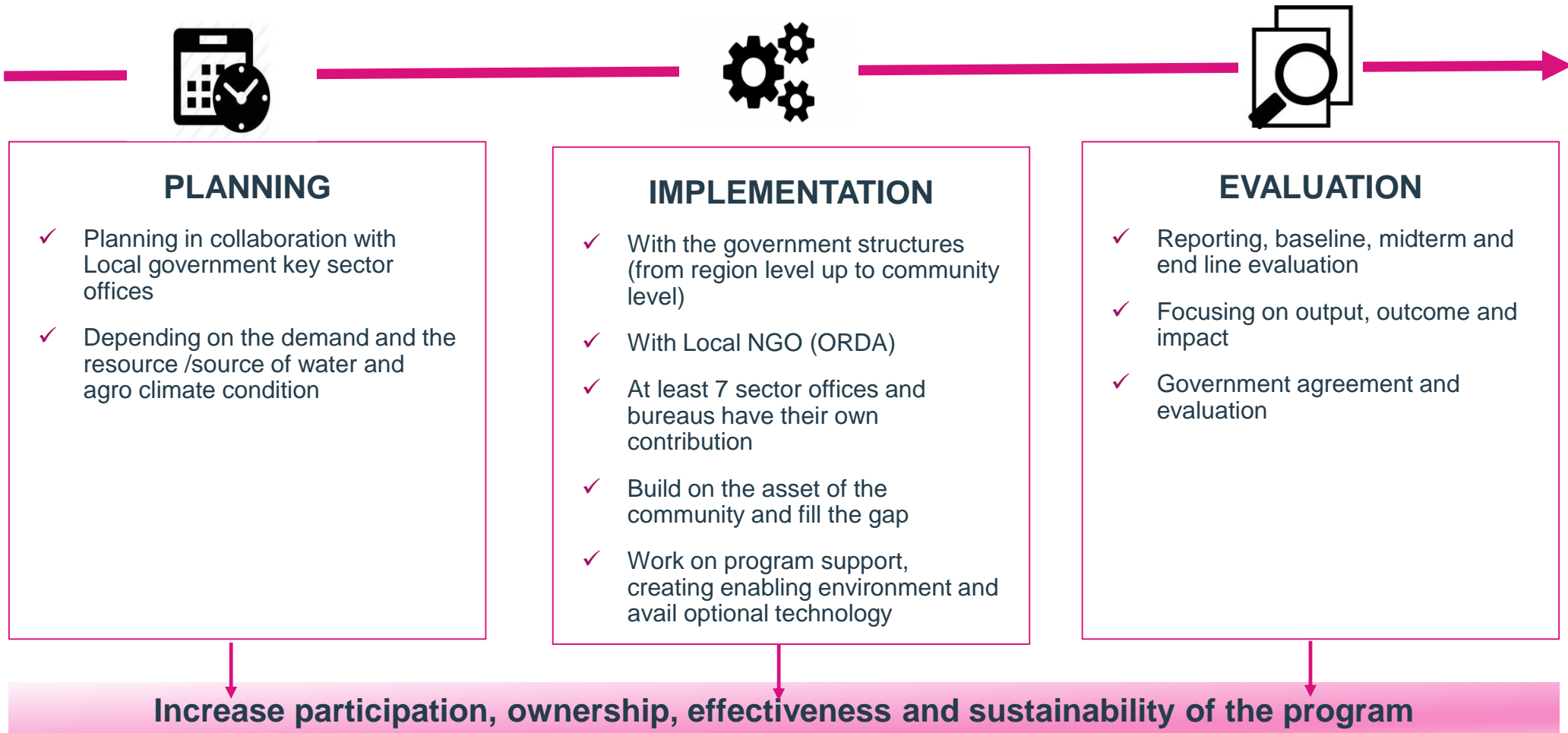


## **WASH-FNS program** (Food and Nutrition Security) in Ethiopia

- 375,000 people, 2013-2018
- Increased self-reliance and income of people/households through VSLA model
- Improved access to water for drinking, hygiene, food production and income generating activities
- Improved sanitation by achieving “Open Defecation Free” communities
- Improved food security and nutrition
- Experience in MUS and SRH (MHM)



# Plan International Ethiopia WASH and Nutrition Programs: WASH-FNS



## Successes WASH-FNS program

### What went very well

- ✓ Awareness raised and sensitized on pros and cons of WASH and nutrition
- ✓ ODF communities created in almost all villages
- ✓ New varieties of nutrient rich crop and food introduced in the community
- ✓ Increased self-reliance and income of people/households through VSLG
- ✓ Increase interest of government and beneficiaries on MUS for drinking, hygiene, food production and income generating activities
- ✓ Gender balancing
- ✓ Create chance for women to have their own resources/ money from home gardening

### More effort needed

- ✓ To utilize improved sanitation products (san mark), including new Approach for post ODF
- ✓ More effort on creating water access and availability for all MUS purposes
- ✓ More systematizing MUS (WASH and Nutrition) with government agricultural extension and health extension work
- ✓ Incorporate Baby WASH
- ✓ Provide more emphasis on Gender and WASH
- ✓ Climate resilient WASH

## Take Home messages

- WASH interventions and nutrition actions for Positive nutritional outcomes
- For high impact on health benefits and livelihood of the community Co-programming WASH in food/nutrition programs whenever possible
- Besides access to food/nutrition and WASH; MUS creates space for women empowerment, reduce women HH burdens, and increase education quality at school

<b>Implementers:</b>	<b>Donors:</b>	<b>Policy makers:</b>
<b>Deepen your impact</b>	<b>Get more impact for each dollar spent</b>	<b>Address poverty across sectors</b>



Girls first

Thank you,

Muluneh Bimrew,  
Plan International Ethiopia  
[muluneh.bimrew@plan-international.org](mailto:muluneh.bimrew@plan-international.org)

January 14, 2019, the Hague, NL