



Invasive Species Compendium

detailed coverage of invasive species threatening livelihoods and the environment worldwide

freely available and open access!

Invasive species are a major threat to the global economy and the environment, costing billions of dollars to control each year. The **Invasive Species Compendium** is an online, comprehensive encyclopedic reference work covering recognition, biology, distribution, impact and management of the world's invasive plants and animals



www.cabi.org/isc

what is the Invasive Species Compendium?

Developed by CABI, with support from a consortium of partners, this resource is the most extensive and authoritative compilation on the subject in the world. Content is derived from thousands of peer-reviewed expert contributors, and backed up by existing compilations of knowledge and research on invasive species. It offers extensive global coverage of invasive species from all taxonomic groups and ecosystems (excluding human pathogens), with fast and easy navigation between text, images, maps and databases.

The Compendium is a vital tool for resource managers, extension workers, policymakers, researchers in the areas of agriculture and the environment, and border control import/export regulatory officers. It is freely available to all on an **open access basis** and is maintained, enhanced and regularly updated with hundreds of new and revised datasheets published each year, plus weekly additions of abstracts and full text articles.

new for 2018

Species information portals

Information portals for featured species, including:

- **Fall armyworm** (*Spodoptera frugiperda*)
- **Tomato leafminer** (*Tuta absoluta*)
- **Parthenium weed** (*Parthenium hysterophorus*)

Species portals contain both technical information for researchers and pest risk assessors, and practical resources for farmers, protected area managers, plant protection officers and quarantine officers. They form a central repository for information resources collated from a wide variety of contributors, including many of the key organisations collaborating in the FAO-led Framework for Partnership for Sustainable Management of the Fall Armyworm in Africa and the Fall Armyworm Research for Development International Consortium.

Practical information resources

Over 5,000 new practical information resources have been added, including factsheets and pest management decision guides for identification and management of invasive species.

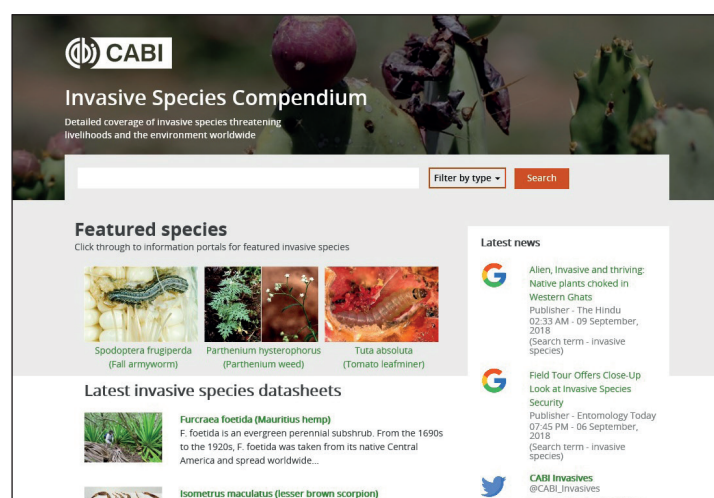
Detailed datasheets

Fully referenced sections on taxonomy and nomenclature, distribution, habitat, identification, biology and ecology, species associations, pathways for introduction, impacts and management, complemented by images and maps, and are supported by abstracts and full text articles.

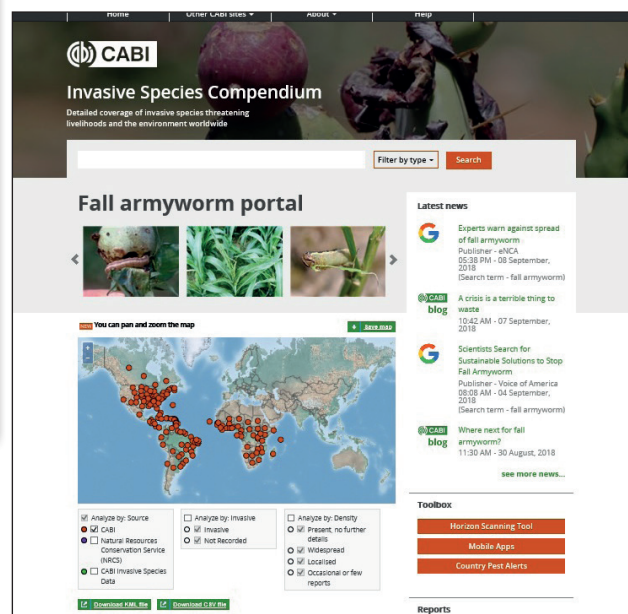
Refreshed Design

With new easy linking to our toolbox of apps, Horizon Scanning Tool and pest alerts.

Species portals collate all the most relevant information on that particular species



Search all the content available for your chosen invasive species from the homescreen



what information does the Invasive Species Compendium contain?

- Detailed datasheets on invasive species with referenced text, images and distribution maps
- Species information portals for featured invasive species
- Downloadable distribution data in KML format (for use in Google Earth) and CSV format (for modelling packages)
- Bibliographic database and library of full text documents
- Practical resources for identification and management of invasive species
- Toolbox of apps, pest alerts and the Horizon Scanning Tool
- Invasive species newsfeed

“The ISC is a repository of the best available science on the invasive species that have the worst impacts in the world. The focus is global. The Compendium covers all taxa in both natural and managed ecosystems.” **Hilda Diaz-Soltero**, USDA Senior Invasive Species Co-ordinator

In addition to datasheets on invasive species the Compendium also includes...

Animal disease datasheets: Over 160 animal diseases and associated pathogens, with extensive information on diagnosis, epidemiology, economic impact, management and control.

Country datasheets: Include selected statistics, csv downloads and lists of links to species and animal disease datasheets.

Habitat datasheets: Provide information on risk of species invasion, impacts and management of invasive species.

Pathway datasheets: Provide information on pathways for introduction and dispersal.

Other datasheets: Provide summary information on associated species, e.g. natural enemies, threatened species, hosts, vectors, etc.

The screenshot shows the Invasive Species Compendium website interface. At the top, there are navigation links for Home, Other CABI sites, About, and Help. The main header reads 'Invasive Species Compendium' with the subtitle 'Detailed coverage of invasive species threatening livelihoods and the environment worldwide'. Below this, there is a search filter for 'black wattle' with a 'Filter by type' dropdown. The filter options include: Datasheets (280), Basic datasheets (230), Full datasheets (50), Research articles (228) (approx.), Abstracts (222), and CABI hosted full text (6). There are also options for Identification and management (4), Identification guides (0), Management factsheets (4), Manuals (0), Posters and leaflets (0), Reports (0), and Videos (0). The search results section shows 56 results (approx.) for 'black wattle'. The first result is 'Período adequado de controle de plantas invasoras em plantios florestais.' by Eloy, E., Caron, B. G., Trevisan, R., Monteiro, G. C., Eli, E. F. (2014). The second result is 'Acacia auriculiformis (northern black wattle)'. The interface includes search options like 'All', 'Sort by', 'A to Z', 'Show', 'Page', '1', '2', '3', '4', '5', '6', '7', '8', '9', '10', '11', '12', '13', '14', '15', '16', '17', '18', '19', '20', '21', '22', '23', '24', '25', '26', '27', '28', '29', '30', '31', '32', '33', '34', '35', '36', '37', '38', '39', '40', '41', '42', '43', '44', '45', '46', '47', '48', '49', '50', '51', '52', '53', '54', '55', '56', '57', '58', '59', '60', '61', '62', '63', '64', '65', '66', '67', '68', '69', '70', '71', '72', '73', '74', '75', '76', '77', '78', '79', '80', '81', '82', '83', '84', '85', '86', '87', '88', '89', '90', '91', '92', '93', '94', '95', '96', '97', '98', '99', '100', '101', '102', '103', '104', '105', '106', '107', '108', '109', '110', '111', '112', '113', '114', '115', '116', '117', '118', '119', '120', '121', '122', '123', '124', '125', '126', '127', '128', '129', '130', '131', '132', '133', '134', '135', '136', '137', '138', '139', '140', '141', '142', '143', '144', '145', '146', '147', '148', '149', '150', '151', '152', '153', '154', '155', '156', '157', '158', '159', '160', '161', '162', '163', '164', '165', '166', '167', '168', '169', '170', '171', '172', '173', '174', '175', '176', '177', '178', '179', '180', '181', '182', '183', '184', '185', '186', '187', '188', '189', '190', '191', '192', '193', '194', '195', '196', '197', '198', '199', '200', '201', '202', '203', '204', '205', '206', '207', '208', '209', '210', '211', '212', '213', '214', '215', '216', '217', '218', '219', '220', '221', '222', '223', '224', '225', '226', '227', '228', '229', '230', '231', '232', '233', '234', '235', '236', '237', '238', '239', '240', '241', '242', '243', '244', '245', '246', '247', '248', '249', '250', '251', '252', '253', '254', '255', '256', '257', '258', '259', '260', '261', '262', '263', '264', '265', '266', '267', '268', '269', '270', '271', '272', '273', '274', '275', '276', '277', '278', '279', '280', '281', '282', '283', '284', '285', '286', '287', '288', '289', '290', '291', '292', '293', '294', '295', '296', '297', '298', '299', '300', '301', '302', '303', '304', '305', '306', '307', '308', '309', '310', '311', '312', '313', '314', '315', '316', '317', '318', '319', '320', '321', '322', '323', '324', '325', '326', '327', '328', '329', '330', '331', '332', '333', '334', '335', '336', '337', '338', '339', '340', '341', '342', '343', '344', '345', '346', '347', '348', '349', '350', '351', '352', '353', '354', '355', '356', '357', '358', '359', '360', '361', '362', '363', '364', '365', '366', '367', '368', '369', '370', '371', '372', '373', '374', '375', '376', '377', '378', '379', '380', '381', '382', '383', '384', '385', '386', '387', '388', '389', '390', '391', '392', '393', '394', '395', '396', '397', '398', '399', '400', '401', '402', '403', '404', '405', '406', '407', '408', '409', '410', '411', '412', '413', '414', '415', '416', '417', '418', '419', '420', '421', '422', '423', '424', '425', '426', '427', '428', '429', '430', '431', '432', '433', '434', '435', '436', '437', '438', '439', '440', '441', '442', '443', '444', '445', '446', '447', '448', '449', '450', '451', '452', '453', '454', '455', '456', '457', '458', '459', '460', '461', '462', '463', '464', '465', '466', '467', '468', '469', '470', '471', '472', '473', '474', '475', '476', '477', '478', '479', '480', '481', '482', '483', '484', '485', '486', '487', '488', '489', '490', '491', '492', '493', '494', '495', '496', '497', '498', '499', '500', '501', '502', '503', '504', '505', '506', '507', '508', '509', '510', '511', '512', '513', '514', '515', '516', '517', '518', '519', '520', '521', '522', '523', '524', '525', '526', '527', '528', '529', '530', '531', '532', '533', '534', '535', '536', '537', '538', '539', '540', '541', '542', '543', '544', '545', '546', '547', '548', '549', '550', '551', '552', '553', '554', '555', '556', '557', '558', '559', '560', '561', '562', '563', '564', '565', '566', '567', '568', '569', '570', '571', '572', '573', '574', '575', '576', '577', '578', '579', '580', '581', '582', '583', '584', '585', '586', '587', '588', '589', '590', '591', '592', '593', '594', '595', '596', '597', '598', '599', '600', '601', '602', '603', '604', '605', '606', '607', '608', '609', '610', '611', '612', '613', '614', '615', '616', '617', '618', '619', '620', '621', '622', '623', '624', '625', '626', '627', '628', '629', '630', '631', '632', '633', '634', '635', '636', '637', '638', '639', '640', '641', '642', '643', '644', '645', '646', '647', '648', '649', '650', '651', '652', '653', '654', '655', '656', '657', '658', '659', '660', '661', '662', '663', '664', '665', '666', '667', '668', '669', '670', '671', '672', '673', '674', '675', '676', '677', '678', '679', '680', '681', '682', '683', '684', '685', '686', '687', '688', '689', '690', '691', '692', '693', '694', '695', '696', '697', '698', '699', '700', '701', '702', '703', '704', '705', '706', '707', '708', '709', '710', '711', '712', '713', '714', '715', '716', '717', '718', '719', '720', '721', '722', '723', '724', '725', '726', '727', '728', '729', '730', '731', '732', '733', '734', '735', '736', '737', '738', '739', '740', '741', '742', '743', '744', '745', '746', '747', '748', '749', '750', '751', '752', '753', '754', '755', '756', '757', '758', '759', '760', '761', '762', '763', '764', '765', '766', '767', '768', '769', '770', '771', '772', '773', '774', '775', '776', '777', '778', '779', '780', '781', '782', '783', '784', '785', '786', '787', '788', '789', '790', '791', '792', '793', '794', '795', '796', '797', '798', '799', '800', '801', '802', '803', '804', '805', '806', '807', '808', '809', '810', '811', '812', '813', '814', '815', '816', '817', '818', '819', '820', '821', '822', '823', '824', '825', '826', '827', '828', '829', '830', '831', '832', '833', '834', '835', '836', '837', '838', '839', '840', '841', '842', '843', '844', '845', '846', '847', '848', '849', '850', '851', '852', '853', '854', '855', '856', '857', '858', '859', '860', '861', '862', '863', '864', '865', '866', '867', '868', '869', '870', '871', '872', '873', '874', '875', '876', '877', '878', '879', '880', '881', '882', '883', '884', '885', '886', '887', '888', '889', '890', '891', '892', '893', '894', '895', '896', '897', '898', '899', '900', '901', '902', '903', '904', '905', '906', '907', '908', '909', '910', '911', '912', '913', '914', '915', '916', '917', '918', '919', '920', '921', '922', '923', '924', '925', '926', '927', '928', '929', '930', '931', '932', '933', '934', '935', '936', '937', '938', '939', '940', '941', '942', '943', '944', '945', '946', '947', '948', '949', '950', '951', '952', '953', '954', '955', '956', '957', '958', '959', '960', '961', '962', '963', '964', '965', '966', '967', '968', '969', '970', '971', '972', '973', '974', '975', '976', '977', '978', '979', '980', '981', '982', '983', '984', '985', '986', '987', '988', '989', '990', '991', '992', '993', '994', '995', '996', '997', '998', '999', '1000'. The interface also includes a 'Refine by' section with options for Geographical Location, Language, Datasheet type, Domain, Kingdom, Phylum, Sub-phylum, Class, and Refine abstracts by: Item Type.

It is simple to search across datasheets, abstracts and full text PDFs. Filters are provided to limit results to particular content types, geographical locations and taxonomic group.

You can access PDFs with one click from the abstract search results

The screenshot shows the abstract of a research article from the Brazilian Journal of Wood Science. The article title is 'Período adequado de controle de plantas invasoras em plantios florestais'. The authors are Elder Eloy¹, Braulio Otomar Caron¹, Rômulo Trevisan¹, Gean Charles Monticori¹, Elvis Felipe Eill¹. The abstract text reads: 'RESUMO O presente trabalho teve como objetivo avaliar a frequência das atividades culturais de comento e roçada das espécies invasoras Acacia mearnsii De Wold, Eucalyptus grandis W Hill ex Maiden, Mimosa scabrella Benth e Adiantum glaucivium Bull submetidas aos espaçamentos: 2,0 m x 1,0 m; 2,0 m x 1,5 m; 3,0 m x 1,0 m e 3,0 m x 1,5 m. O experimento foi conduzido no município de Frederico Westphalen-RS, utilizando o delineamento experimental de blocos completos casualizados com três repetições, no esquema de parcelas subdivididas. As observações foram realizadas durante dez meses transcorridos a partir do plantio. A frequência das atividades culturais é necessária a cada dois meses até serm mês após o plantio para todas as espécies. Para A. mearnsii, M. scabrella e A. glaucivium, a roçada e o comento não sofreram influência do espaçamento durante o período avaliado. Já E. grandis é a única espécie que reagia na presença de plantas invasoras, sendo influenciado pelo espaçamento a partir do sétimo mês após o plantio. Palavras-chave: comento, densidade de plantio, espécies florestais, roçada. Adequate time to control invasive plants in forest plantings ABSTRACT This study aimed to evaluate the frequency of cultural activities of mowing and crowning of Acacia mearnsii De Wold, Eucalyptus grandis W Hill ex Maiden, Mimosa scabrella Benth and Adiantum glaucivium Bull forest species submitted to the spacing: 2.0 m x 1.0 m, 2.0 m x 1.5 m, 3.0 m x 1.0 m and 3.0 m x 1.5 m. The experiment was performed in the city of Frederico Westphalen-RS, using a randomized complete block design in three replications in split plots. The observations were made for ten months after planting. The frequency of cultural activities is required every two months until the sixth month after planting for all species. Regarding A. mearnsii, M. scabrella and A. glaucivium, mowing and crowning are not influenced by spacing during the period of study. On the other hand, E. grandis is the only one species that reacts in the presence of invasive plants. Furthermore, E. grandis is influenced by spacing from the seventh month after planting. Keywords: weeding, planting density, forestry species, mowing.

donors

We would like to thank the International Development Consortium members for their help and guidance in creating the Invasive Species Compendium:

Australian Centre for International Agricultural Research (ACIAR)
Canadian Food Inspection Agency (CFIA)
Canadian Forest Service (CFS)
Caribbean Plant Health Directors Forum (CPHD)
Centre of Agriculture and Biosciences International (CABI)
Comisión Nacional para el Conocimiento y Uso de la Biodiversidad, Mexico (CONABIO)
Department for Environment, Food and Rural Affairs, UK (DEFRA)
Department for International Development, UK (DFID)
European Commission, Directorate-General for Environment (DG ENV)
Forum for Agricultural Research in Africa (FARA)
Global Affairs Canada (GAC)
Grains Research & Development Corporation, Australia (GRDC)
Horticulture Innovation Australia (HIA)
Invasive Animals Cooperative Research Centre, Australia (IACRC)
Ministère de l'Environnement, de l'Énergie et de la Mer, France
Ministry of Agriculture and Farmers Welfare, India
Malaysian Agricultural Research and Development Institute (MARDI)

National Health, Safety and Quality Service for Agri-Food, Mexico (SENASICA)
Ministry of Economic Affairs, Agriculture and Innovation, Netherlands
Monsanto
Plant Biosecurity Cooperative Research Centre, Australia (PBCRC)
Secretariat of the Pacific Community
Swiss Agency for Development and Cooperation
Syngenta Crop Protection
United States Agency for International Development (USAID)
United States Department of Agriculture
United States Department of Agriculture - Agricultural Research Service (USDA-ARS)
United States Department of Agriculture - Animal & Plant Health Inspection Service (USDA-APHIS)
United States Department of Agriculture - Foreign Agricultural Service (USDA-FAS)
United States Department of Agriculture - Forest Service (USDA-FS)
United States Department of Commerce - National Oceanic and Atmospheric Administration, National Ocean Service (NOAA)
United States Department of Interior - Fish and Wildlife Service (USFWS)

We would also like to acknowledge the following donors, whose funding of CABI's Action on Invasives programme supported the upgrade of the ISC, including the addition of new resources and the species portals, and its ongoing maintenance: Department for International Development, UK (DFID), Directorate-General for International Cooperation, Netherlands (DGIS)

partners

European and Mediterranean Plant Protection Organization (EPPO), Invasive Species Specialist Group (ISSG), World Organization for Animal Health (OIE)

content partners

United States Agency for International Development (USAID), Feed the Future (FTF) Initiative, International Maize and Wheat Improvement Centre (CIMMYT), Plantwise.

contributors

The Invasive Species Compendium could not have been produced without the collaboration of experts from around the world. See the list of the authors, reviewers and consultants who have contributed towards the development of the Compendium at www.cabi.org/isc/contributors

join us

We are currently looking for ways to fund extensions to the Invasive Species Compendium and would like to speak to organizations interested in working with us.

www.cabi.org/isc

contact

Cambria Finegold (c.finegold@cabi.org)

CABI, Nosworthy Way, Wallingford, Oxfordshire OX10 8DE, UK. **T:** +44 (0) 1491 829305, **F:** +44 (0)1491 829198